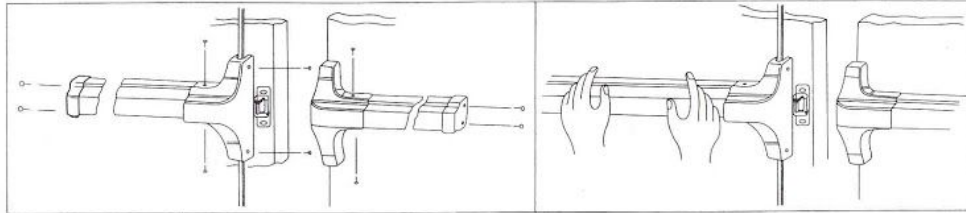


**STEP 7 : DIRECTIONS FOR REVERSING HANDING OF DEVICE**

Handing of the device was preset at factory for left hand . To change handing of the device follow steps shown below.

1. Turn loose screws 'A' and remove screw 'B' and spring 'C'.
2. Reverse the positions of screw 'B' and spring 'C' and then tighten screws 'A'.
3. The device is now set for right hand.



**STEP 8 : INSTALL BOTTOM LATCH**

1. Align center of bottom latch assembly as shown on template(B) with vertical center line of device body and mark door as indicated on template(B).

**CAUTION: BE SURE THE DISTANCE FROM BOTTOM SIDE OF DOOR BEVEL TO BOTTOM OF LATCH ASSEMBLY MUST BE 13/32" (10MM).**

2. Tighten screws to install bottom latch assembly.

**STEP 9 : INSTALL AND ADJUST TOP ROD**

1. Keep the end of rod with nut upward to connect with screw bolt in top latch assembly.
2. Connect the other end of rod and bar assembly by inserting connecting pin.
3. Turn adjustable rod nut until top latch assembly retract properly and then tighten the rod nut.

**STEP 10 : INSTALL AND ADJUST BOTTOM ROD**

1. Keep the end of rod with nut downward to connect with screw bolt in bottom latch assembly.

2. Connect the other end of rod and bar assembly by inserting connecting pin.
3. Turn adjustable rod nut until bottom latch assembly retract properly and then tighten the rod nut.

**STEP 11 : INSTALL FLOOR KEEPER**

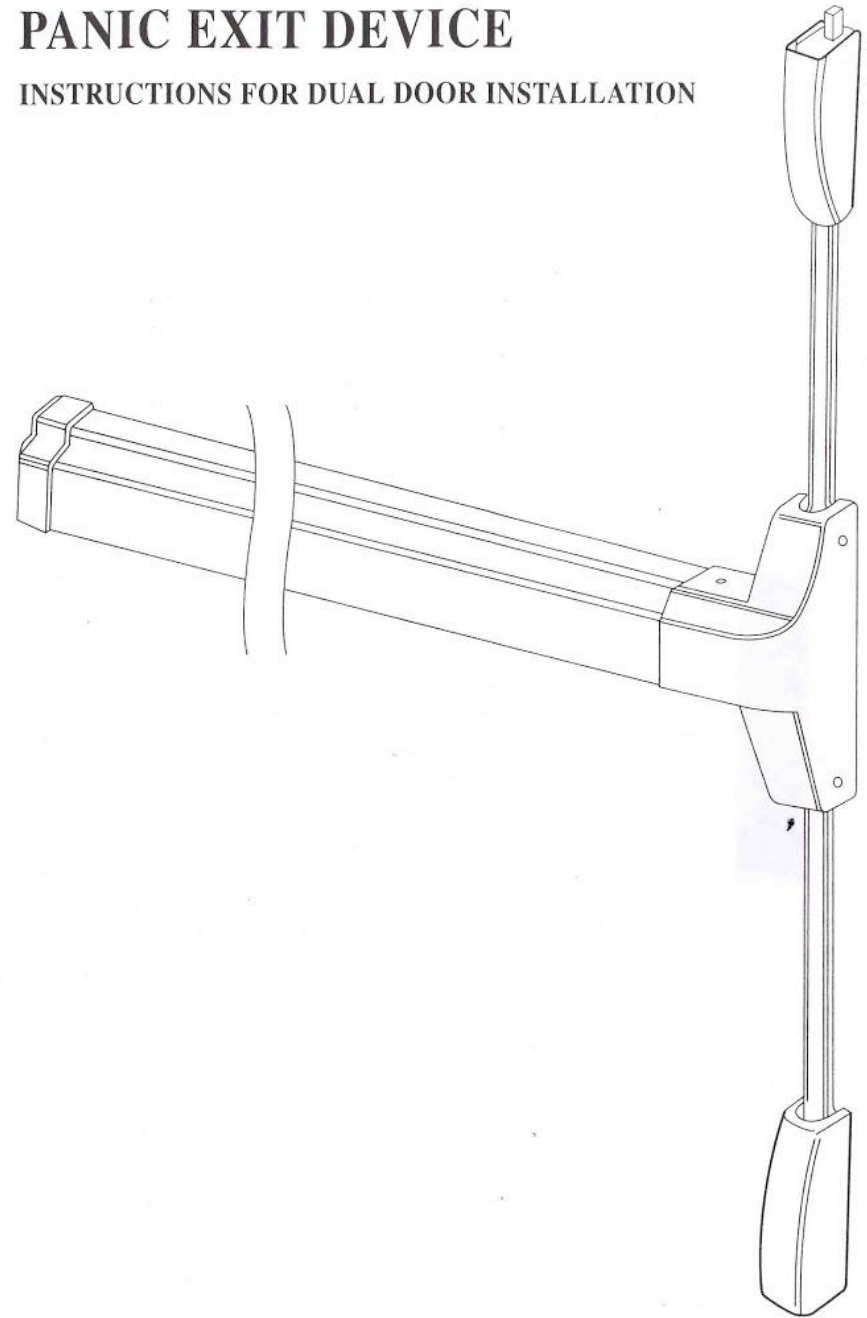
1. Let the fix rod of bottom latch assembly attach floor and mark on floor
2. Drill a 1/2" (12.7mm)  $\varnothing$  hole and nail the floor keeper on floor.

**STEP 12 : TEST PUSH BAR AND DOGGING OPERATIONS:**

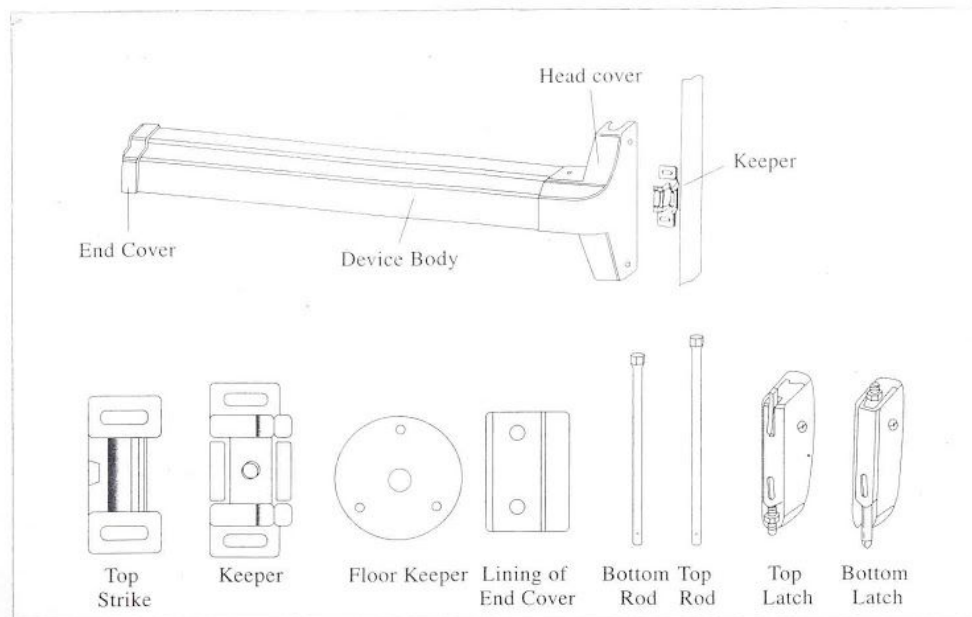
1. The top latches should engage the top strike and the bottom latch should engage the floor keeper when the door is closed. If the door can be pushed open without depressing the push bar the top rod connector has been over adjusted. Adjust connector as needed.
2. The top and bottom latches should disengage from the strike freely when the push bar is depressed or dogged down. If they do not disengage, adjust the connectors as needed and retest for proper operation.

# PANIC EXIT DEVICE

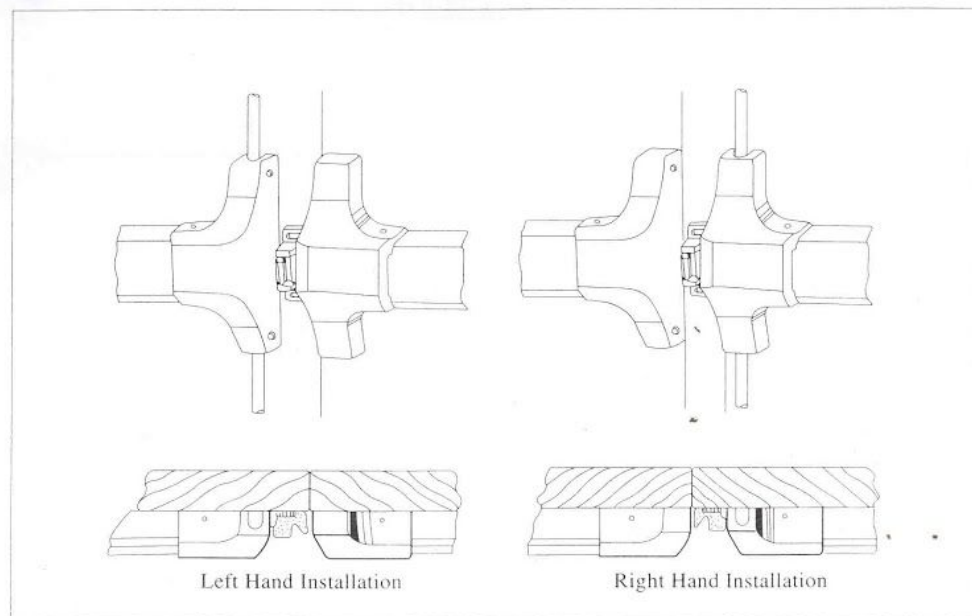
## INSTRUCTIONS FOR DUAL DOOR INSTALLATION



## PARTS IDENTIFICATION



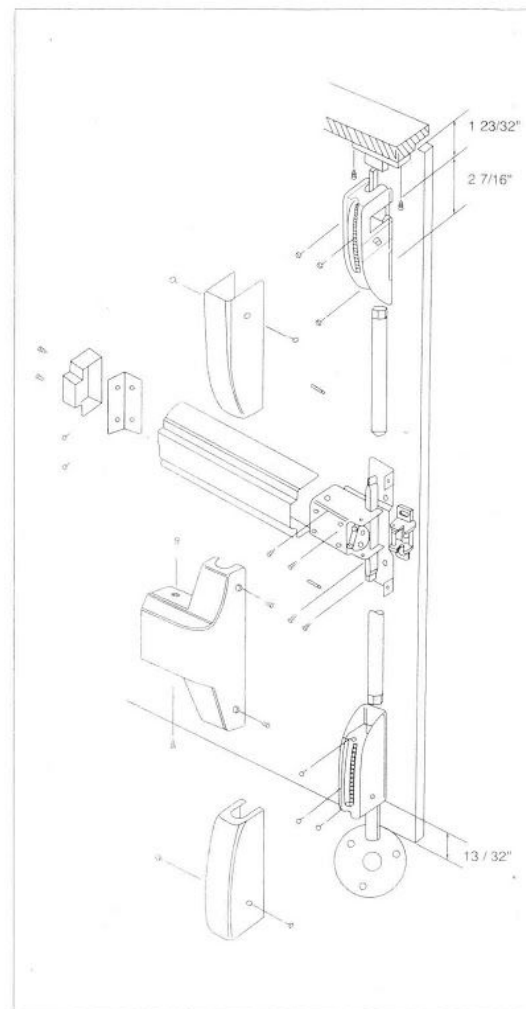
## POSITION OF KEEPER FOR LEFT HAND INSTALLATION AND RIGHT HAND INSTALLATION



## DETERMINE HANDING OF YOUR DOOR

Check to be sure the Exit Device is the proper hand for your door. Stand at interior side and face to your door.

1. Your door is a left hand door if hinges were installed at your left hand.
2. Your door is a right hand door if hinges were installed at your right hand.



## STEP 1: MARK CENTER LINE ON DOOR

Mark center line on inside of door. Establish the horizontal center line of the device by drawing a line across the door 40" above floor line.

## STEP 2: MARK DOOR AND DRILL HOLES

1. Fold and apply template(A) to edge of door level and mark door as indicated on template.
  2. Drill holes in accordance with the diameters as indicated on template.
- CAUTION: DRILL "D" HOLE LATELY

## STEP 3: INSTALL DEVICE BODY

1. Turn loose screws to remove head over and end cover
2. Align screw holes of head and end with the holes on door and tighten screws.
3. If the width of door is less than 36" cut end portion of device body as needed to fit door size.

## STEP 4: INSTALL KEEPER

1. Align "C" screw holes of keeper with the holes on door and tighten screws
2. Drill "D" hole after proper adjustment and then tighten screw.

## STEP 5: INSTALL TOP STRIKE

1. Align center of strike shown on template(B) with vertical center line of device body and mark door as indicated on template(B).
2. Tighten screws to install top strike with proper adjustment.

## STEP 6: INSTALL TOP LATCH

1. Align center of top latch assembly as shown on template(B) with vertical center line of device body and mark door as indicated on template(B).
- CAUTION: BE SURE THE DISTANCE FROM DOOR BEAM TO CENTER OF SCREW HOLE "A" MUST BE 1-23/32" (44MM).
2. Tighten screws to install top latch assembly